

PROJECT

CHAIR BOOKCASE BOOKCASE CHAIR

MATERIAL

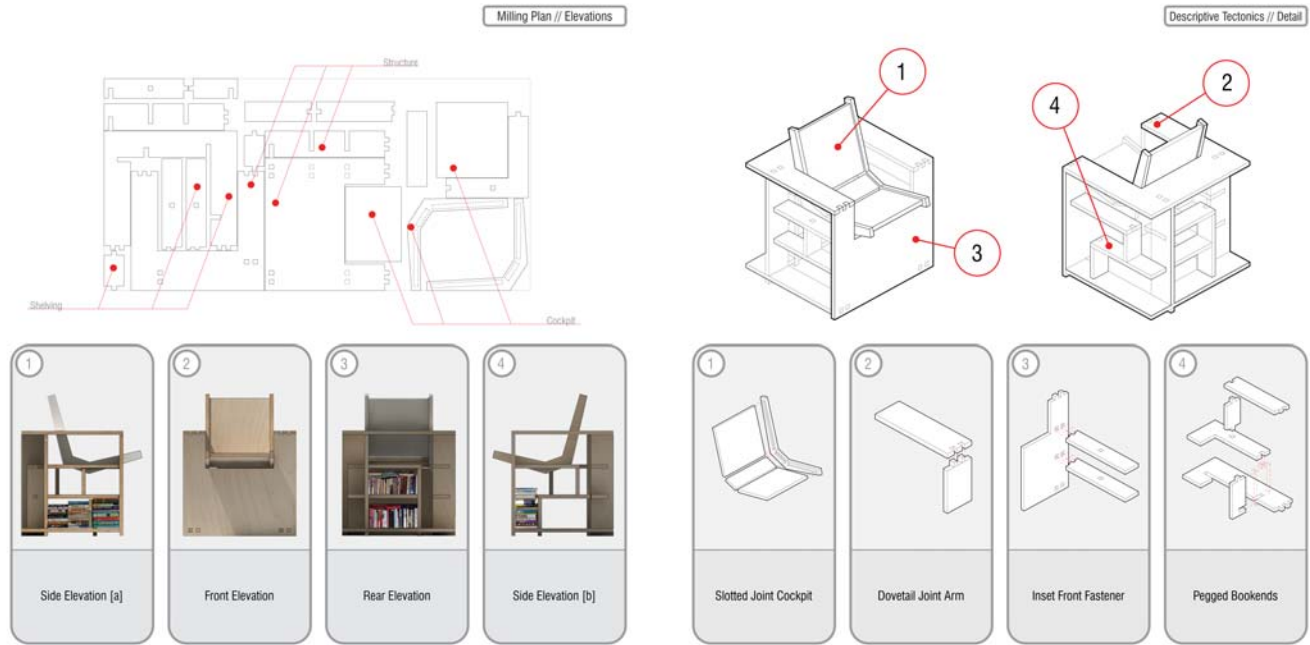
PLYWOOD

DATE

2009-CURRENT

The desire of this design is founded in material efficiency, functional multiplicity, clarity of tectonic systemization, and an aesthetic celebration of the intrinsic form and beauty of plywood. Developed as a chair and a bookcase simultaneously, the intention was to provide both the storage for, and a seat in which to read, books. Divided into three systems, there is [1] a cockpit chair that has an adjustable angle of repose and uses a compressive slotted connection, [2] a structural frame and cover/cloak that uses a fingered connection, and [3] an infill shelving system that deploys a pegged connection. The 237 books complete the remainder of the composition. Focused on sustainability, the chair is materially efficient using over 90% of the 4'x8' sheet of plywood. Based on the hybrid dimensions of Le Corbusier's infamous leather and metal LC2 chair and the flat pack limitations of a single sheet of plywood, the chair bookcase bookcase chair acts as a delicate lattice when empty and a dominant cube when full. The tectonic to provide for perpetual assembly and disassembly without tools deploys three connection types to articulate each of the systems. Milled with the precision of a CNC, but with a simplicity of connection so that pieces only fit in one configuration, the chair requires no instructions or tools.

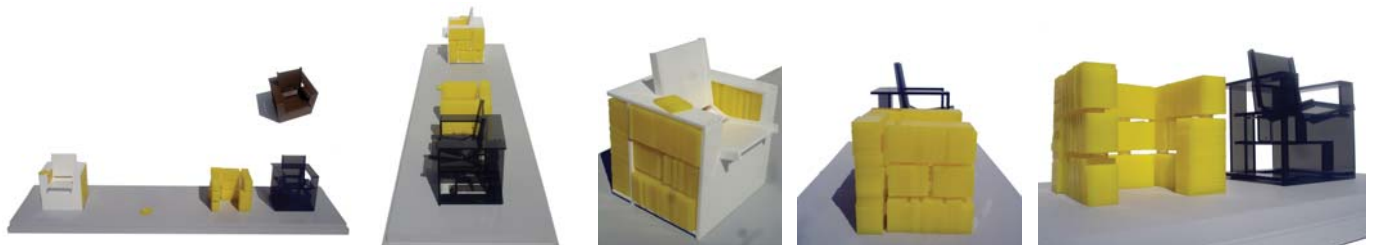
CHAIR BOOKCASE BOOKCASE CHAIR



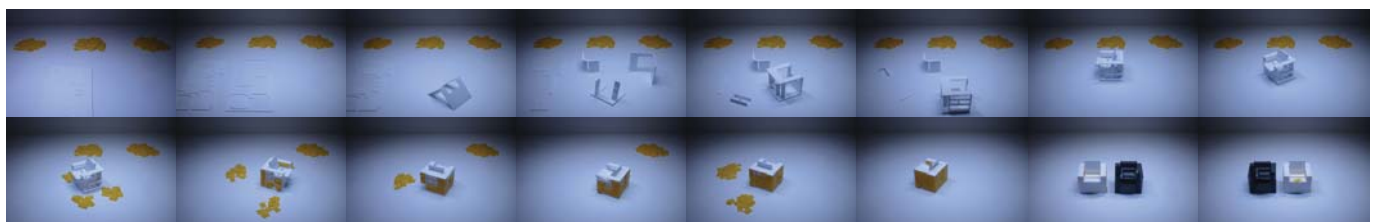
TEMPLATE FOR PLYWOOD MILLING [1 SHEET]

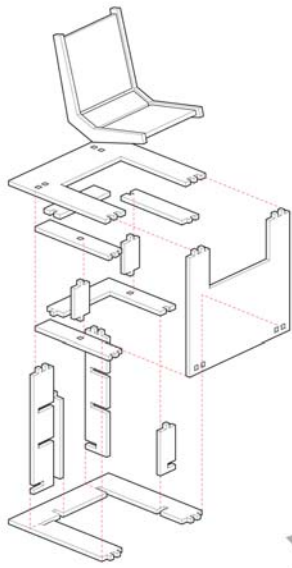
JOINTS - VARIABLE CONNECTIONS FOR EACH SYSTEM

BOOKCASE CHAIR: BOOKS AND CHAIR

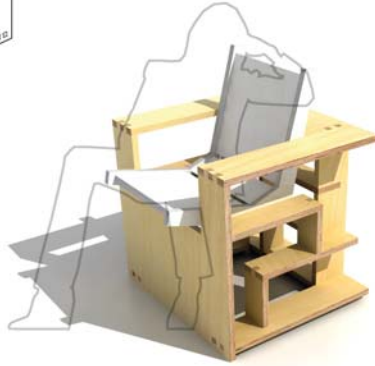


MOVIE STILLS OF ASSEMBLY





Componential Construction



ASSEMBLY DIAGRAM

Adjustable Cockpit



SIDE VIEW - VARIABLE COCKPIT POSITIONS

PROTOTYPE CHAIRS

