



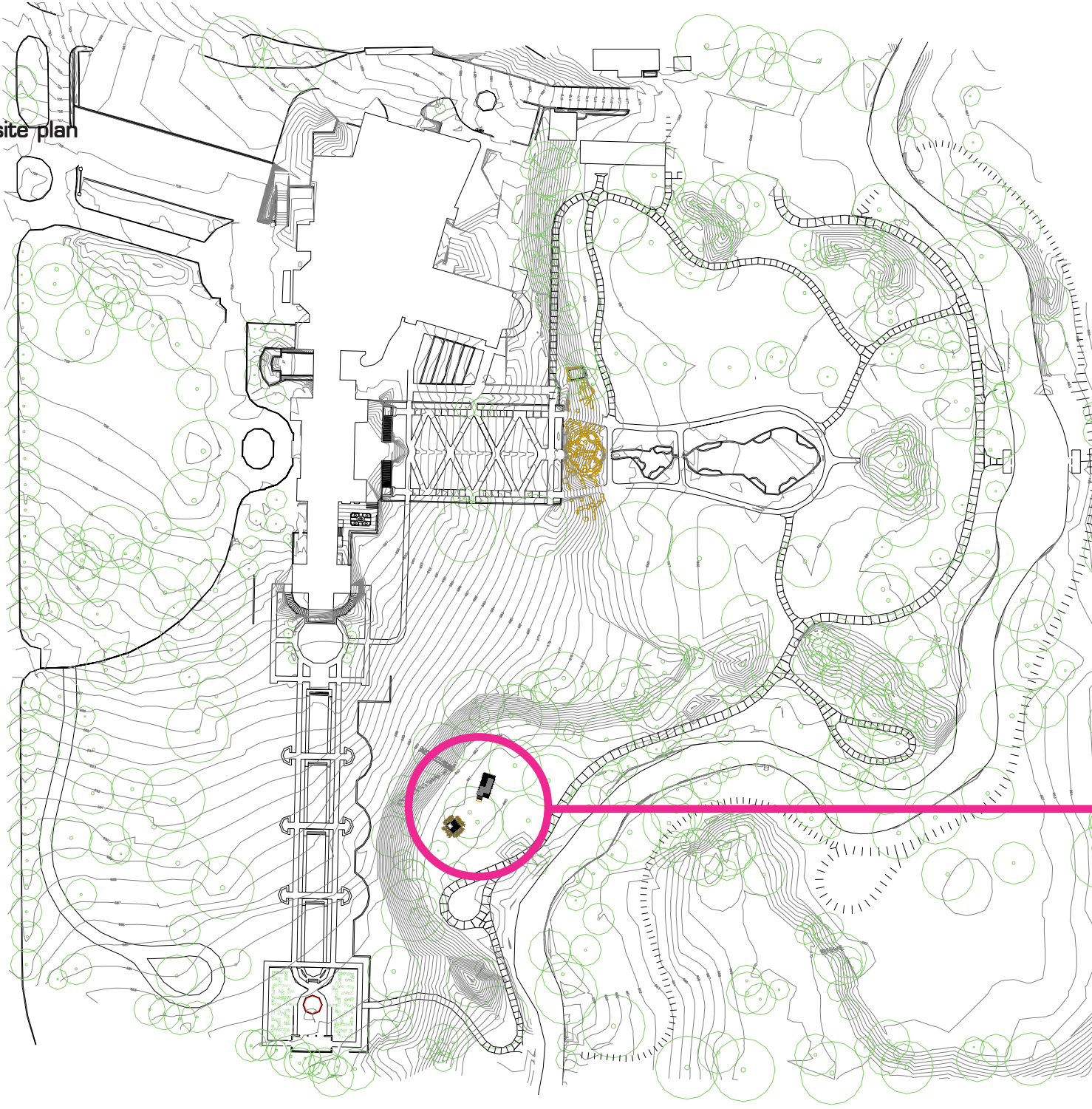


An invited design competition called for the construction of a \$2500 temporary pavilion to be installed in the gardens of the Philbrook Museum of Art in Tulsa, Oklahoma. Two pavilions in dialogue with one another, identical in dimension, (one horizontal [clad in mirrors] and one vertical [cloaked in branches]) blur and frame the surrounding landscape.

LANDED BLUR

a garden pavilion – philbrook museum, tulsa, ok

site plan

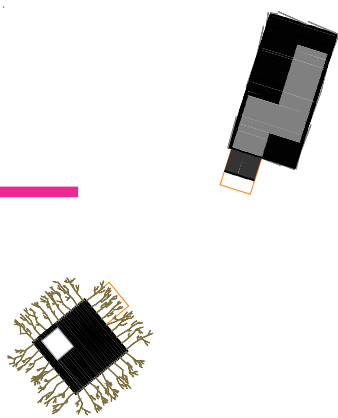


Situated on the grounds of the Philbrook Museum of Art, two pavilions sit as smudges in the landscape. An horizontal 18'x9'x9' mirror box and a vertical 9'x9'x18' branch box stand in dialogue with one another and the surrounding landscape. Evaporating into the natural surroundings, the lattice boxes become viewing chambers for engaging, focusing, and re-experiencing the surrounding landscape. Made of layered 2"x2" pine structure, the frame folds and deforms to form both furniture and oculus. Each reflects and dissolves their exterior to enigmatically meld with the surrounding landscape, while their interiors become anthropomorphically scaled furniture landscapes each engaging a framed view.

The horizontal box is cloaked in slightly canting standard closet mirrors: pre-cut and inexpensive. The undulating surface re-presents the surrounding landscape in a pixelated fractal blur. Held apart from one another small slits of light and view penetrate between the panels. Three sheets of stained plywood form an accessible floor surface for primary travel. The lattice frame folds to form a curved horizontal lounger; three stools of varied widths and heights sharing a single portal, and a sunken cockpit.

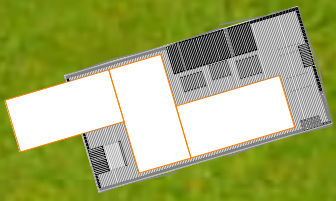
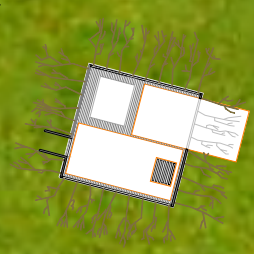
The branch box employs recycled branches trimmed from the grounds of the Philbrook Gardens. These natural entities group to form a dense thicket. The branch box houses a single chair and a sunken corten impluvium. An exaggerated conpluvium of dangling 2"x2"s creates a framed roof oculus composing the sky. The impluvium is activated by weather serving as a rain chamber, a cloud catcher, a reflecting pool, and a brise-soleil. Two stained plywood sheets form an accessible floor and direct circulation.

The two figures reflect and compliment the landscape blurring the surroundings in their surface and framing it through their viewing mechanisms. They stand as silent composed figures: chambers for viewing and figures for engaging.





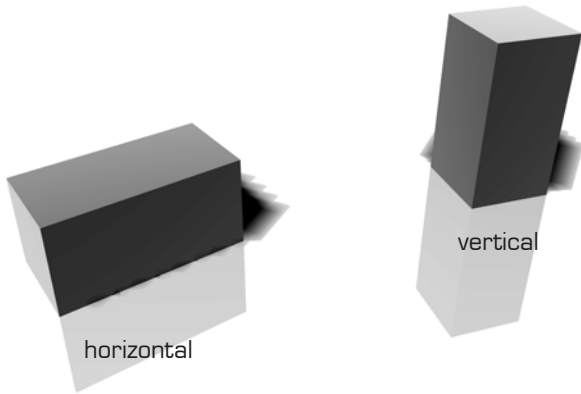
L



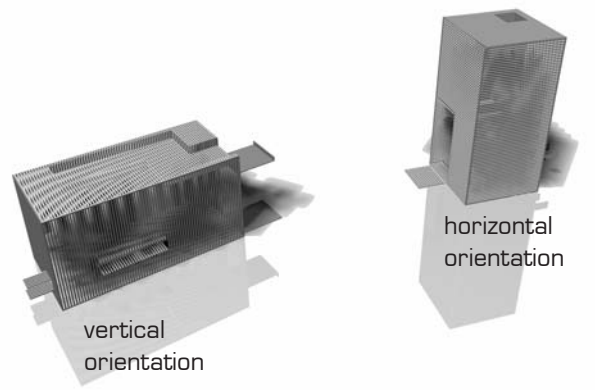
elevated view from ridge



dimensional volumes



2"x2" pine lattice frames



diagrammatic components

blurred skins

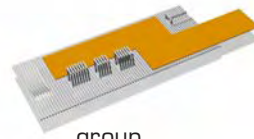
surface + circulation



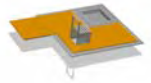
mirrors



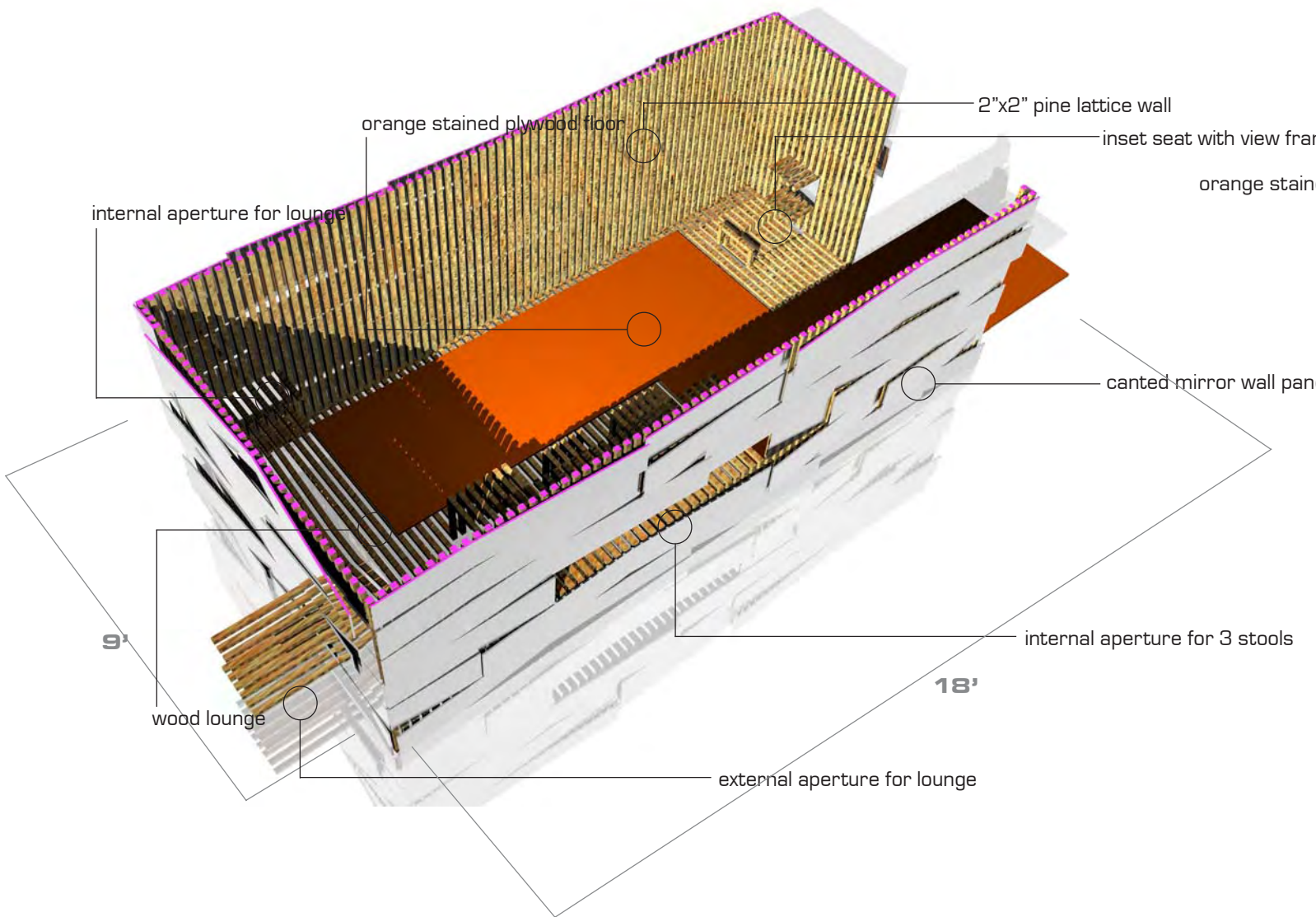
branches



group



single



sectional plan

2"x2" pine lattice wall

me

ed plywood floor

els

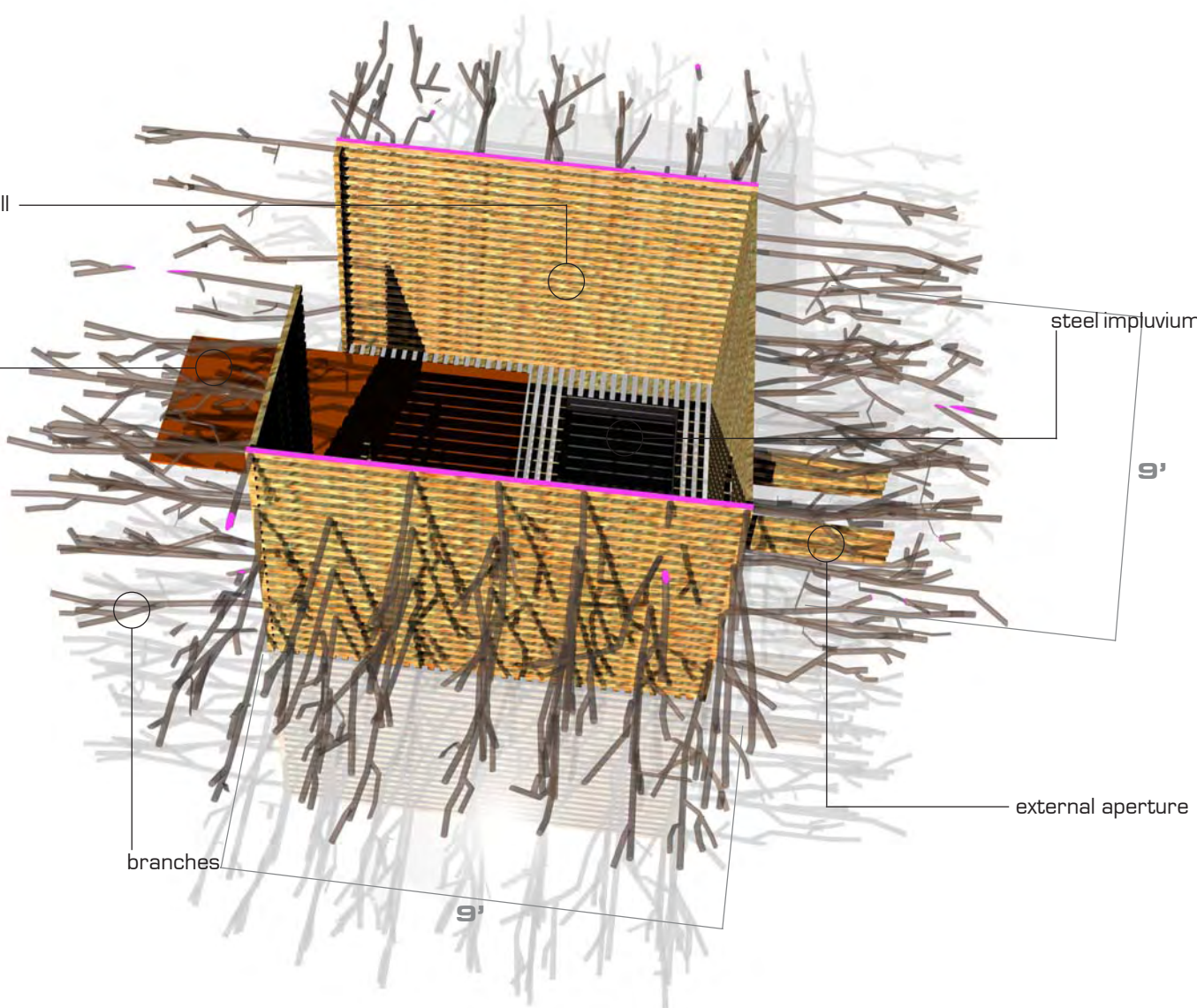
steel impluvium

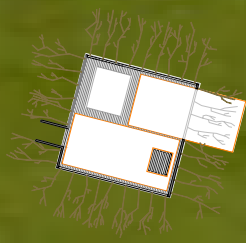
9'

external aperture

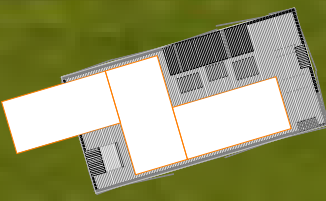
branches

9'

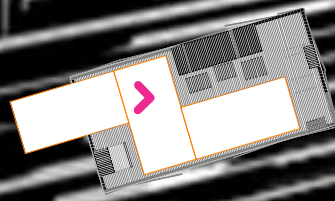
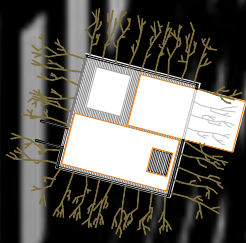




branch box entry

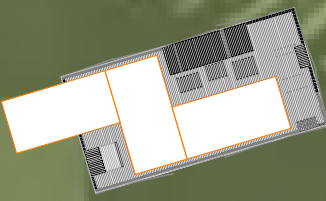
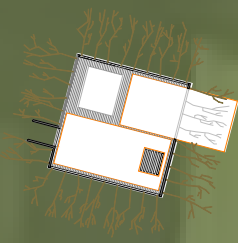




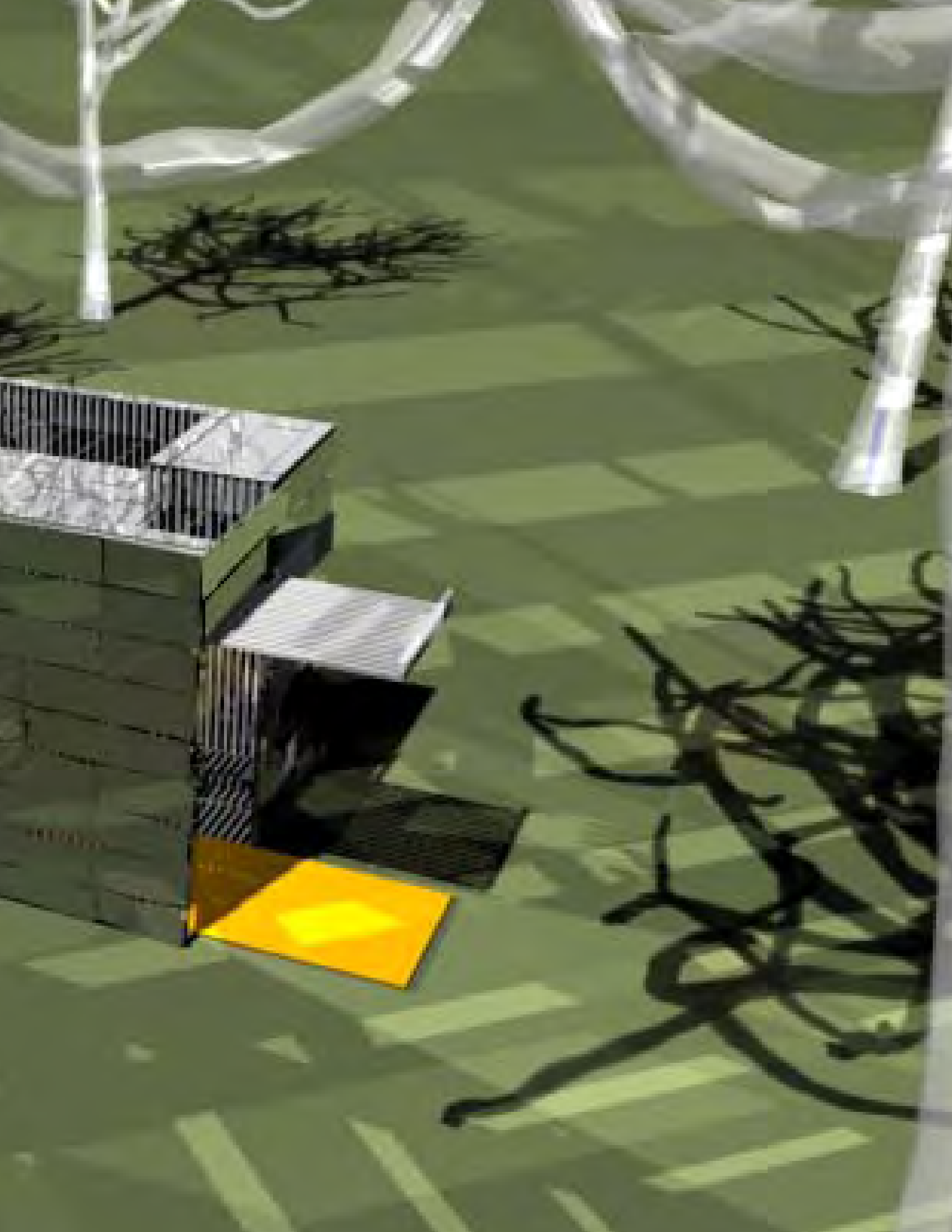


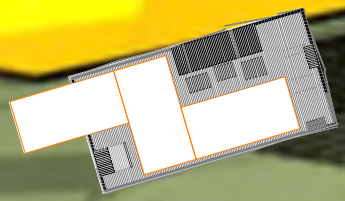
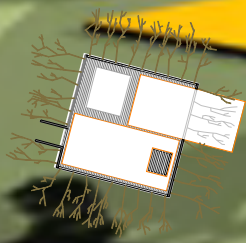
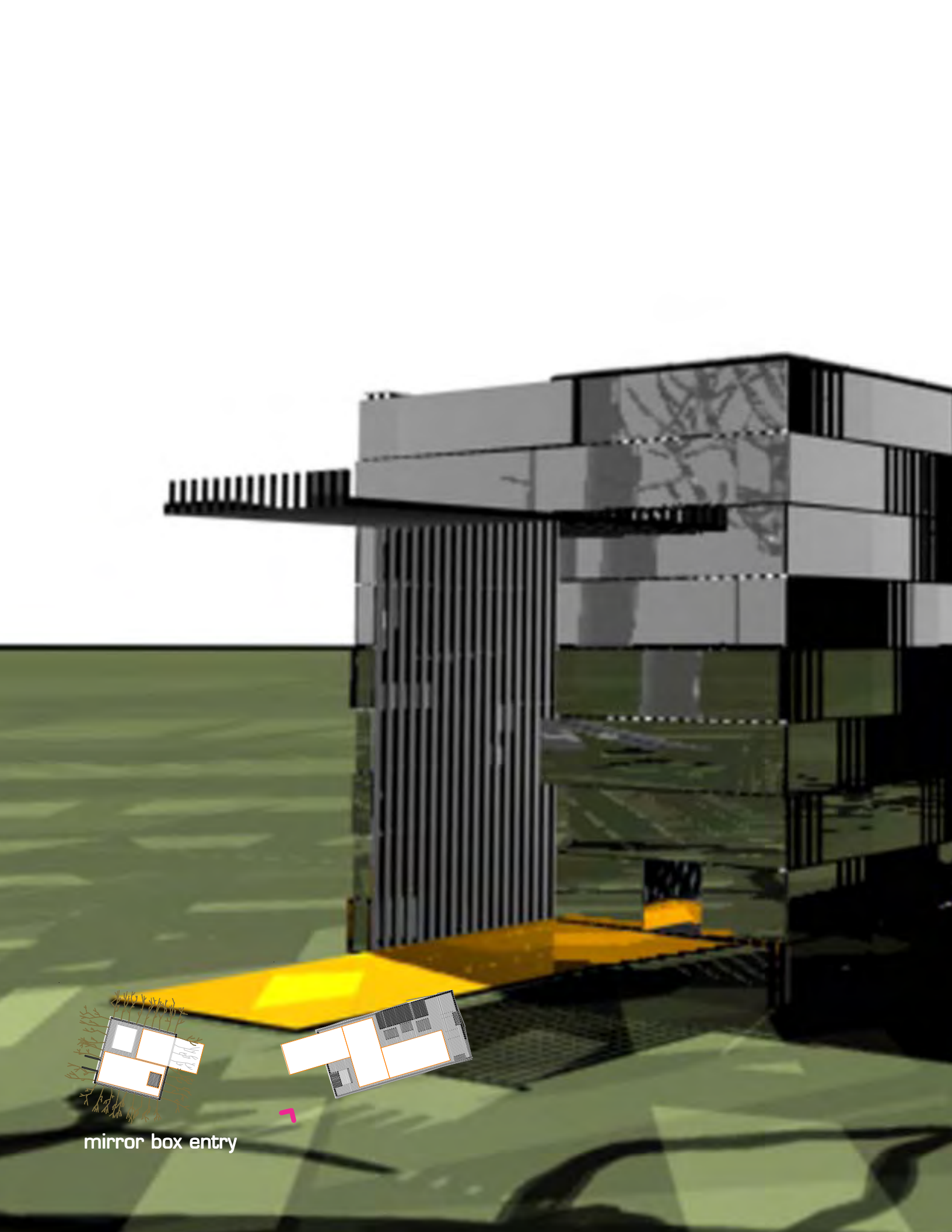
mirror box interior



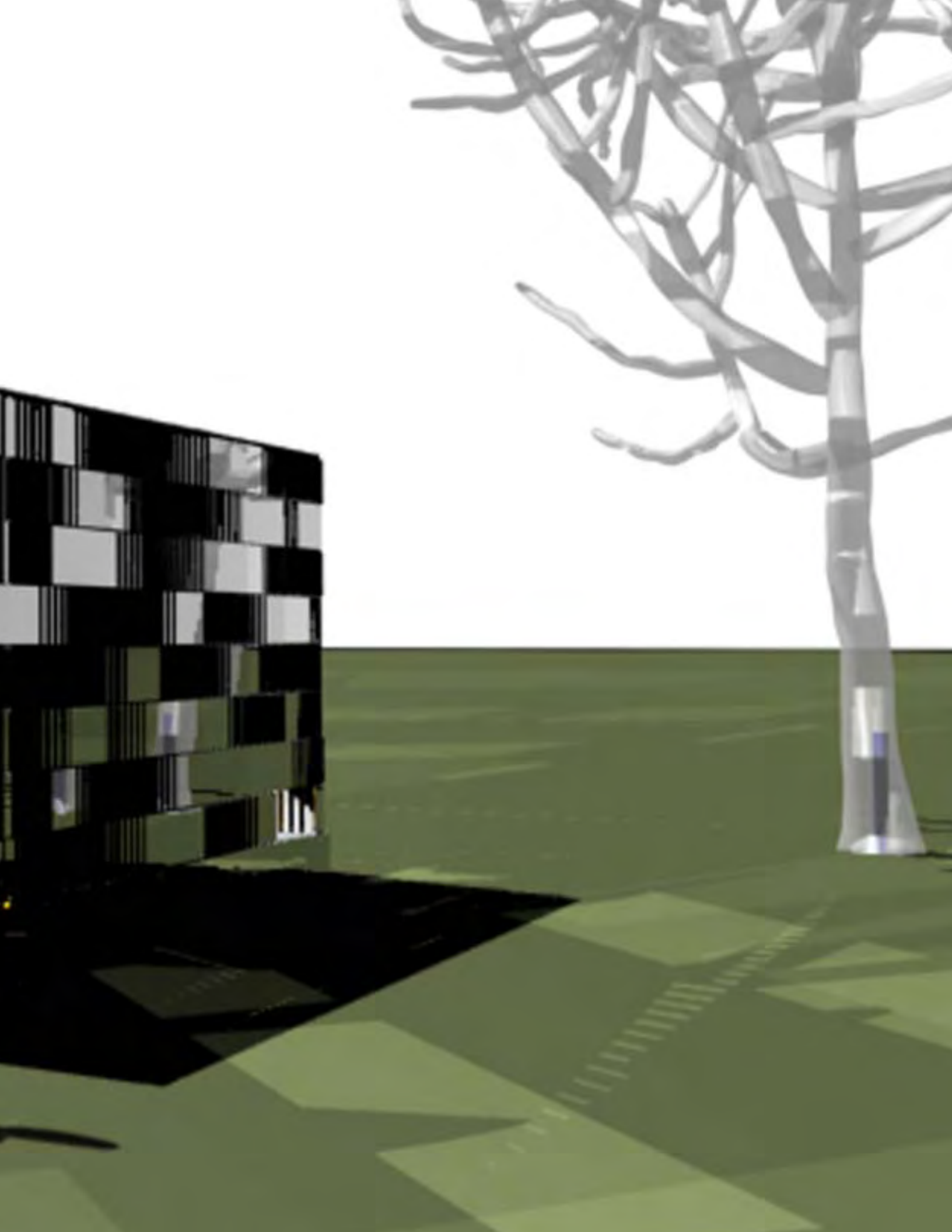


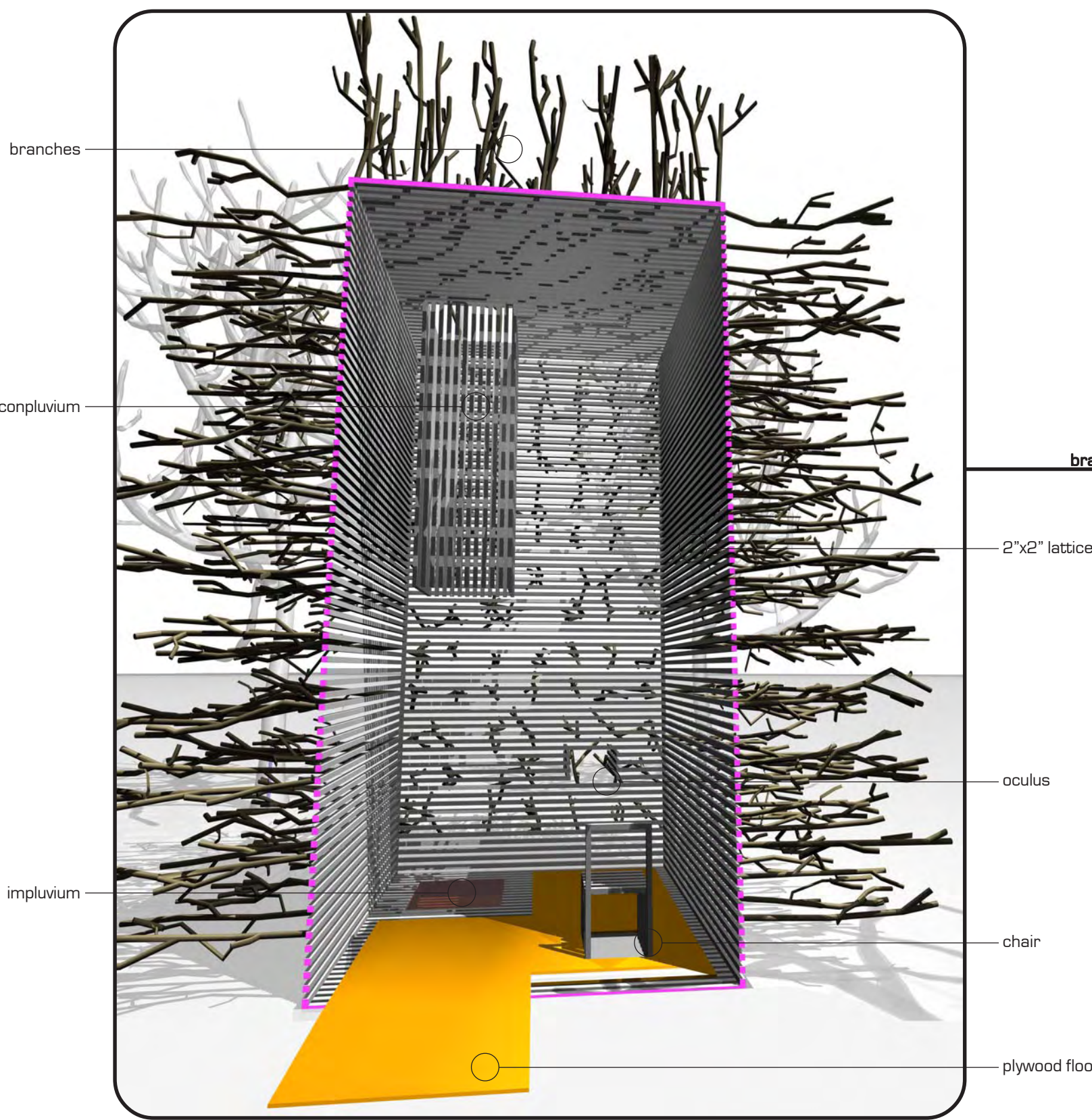
mirror box - view from ridge



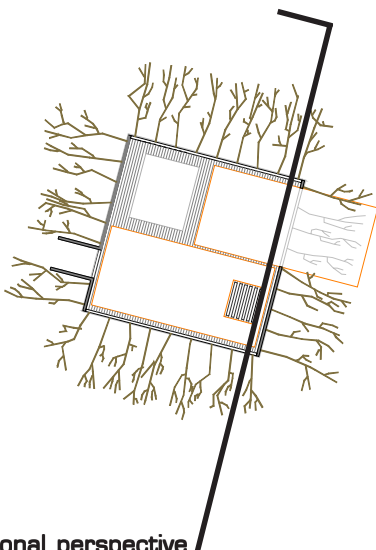


mirror box entry

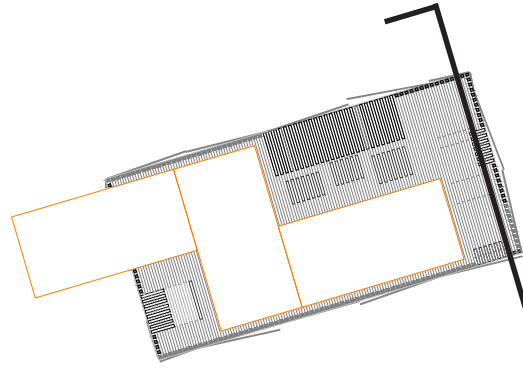




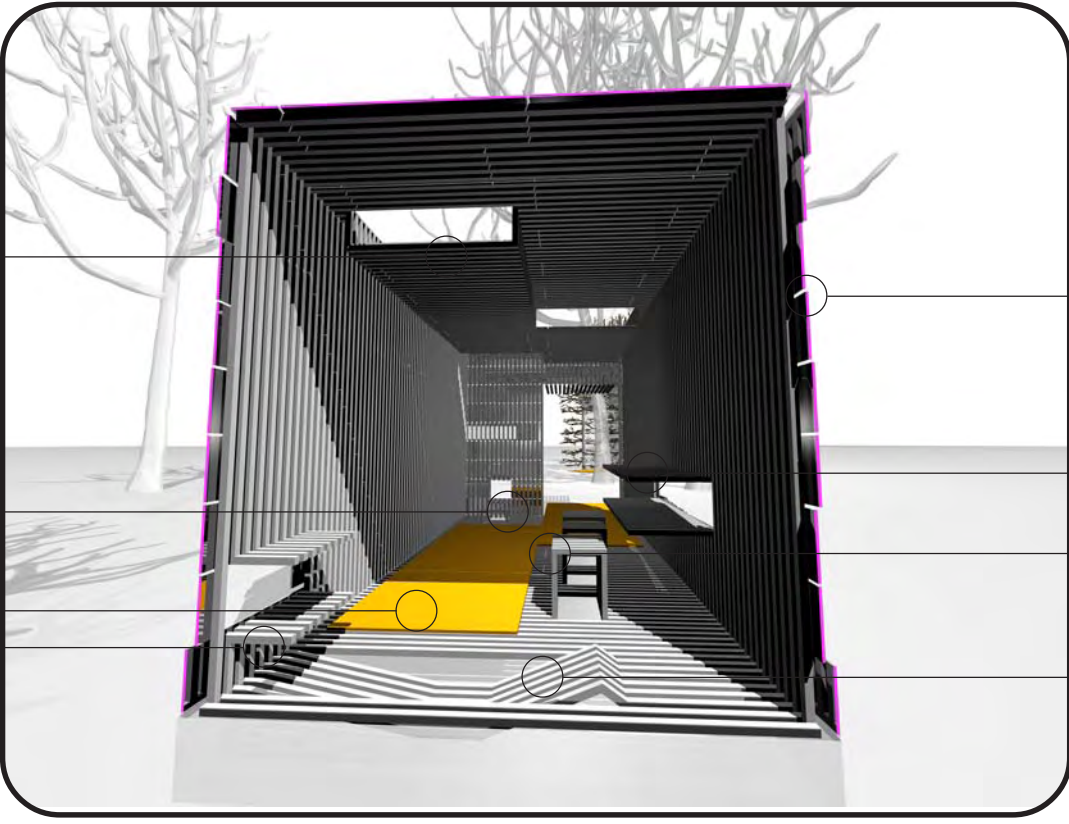
sections



branch box sectional perspective

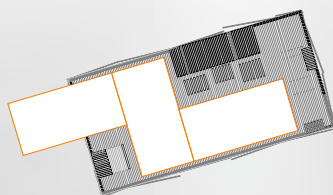
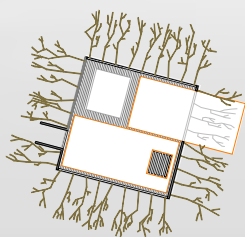
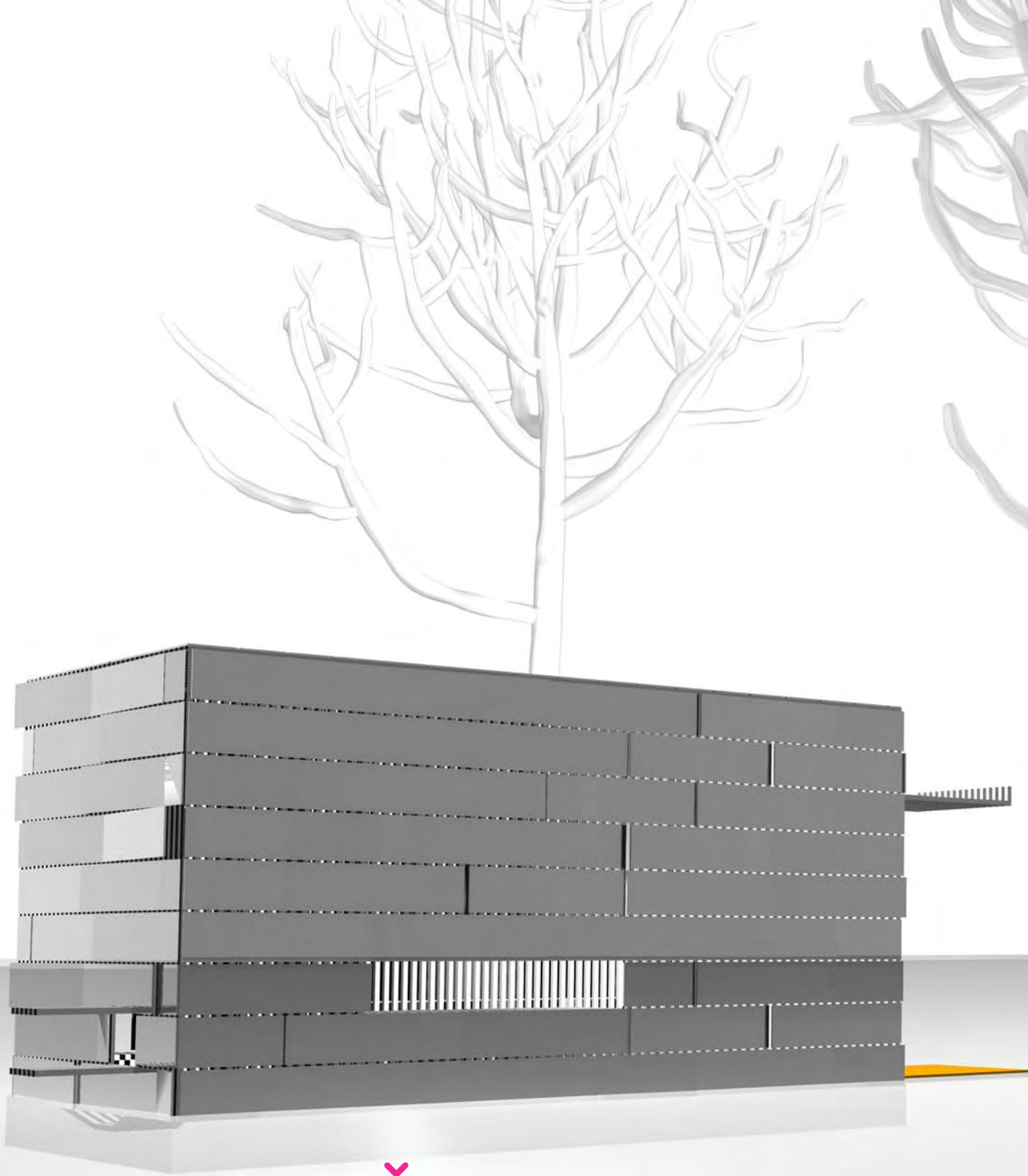


mirror box

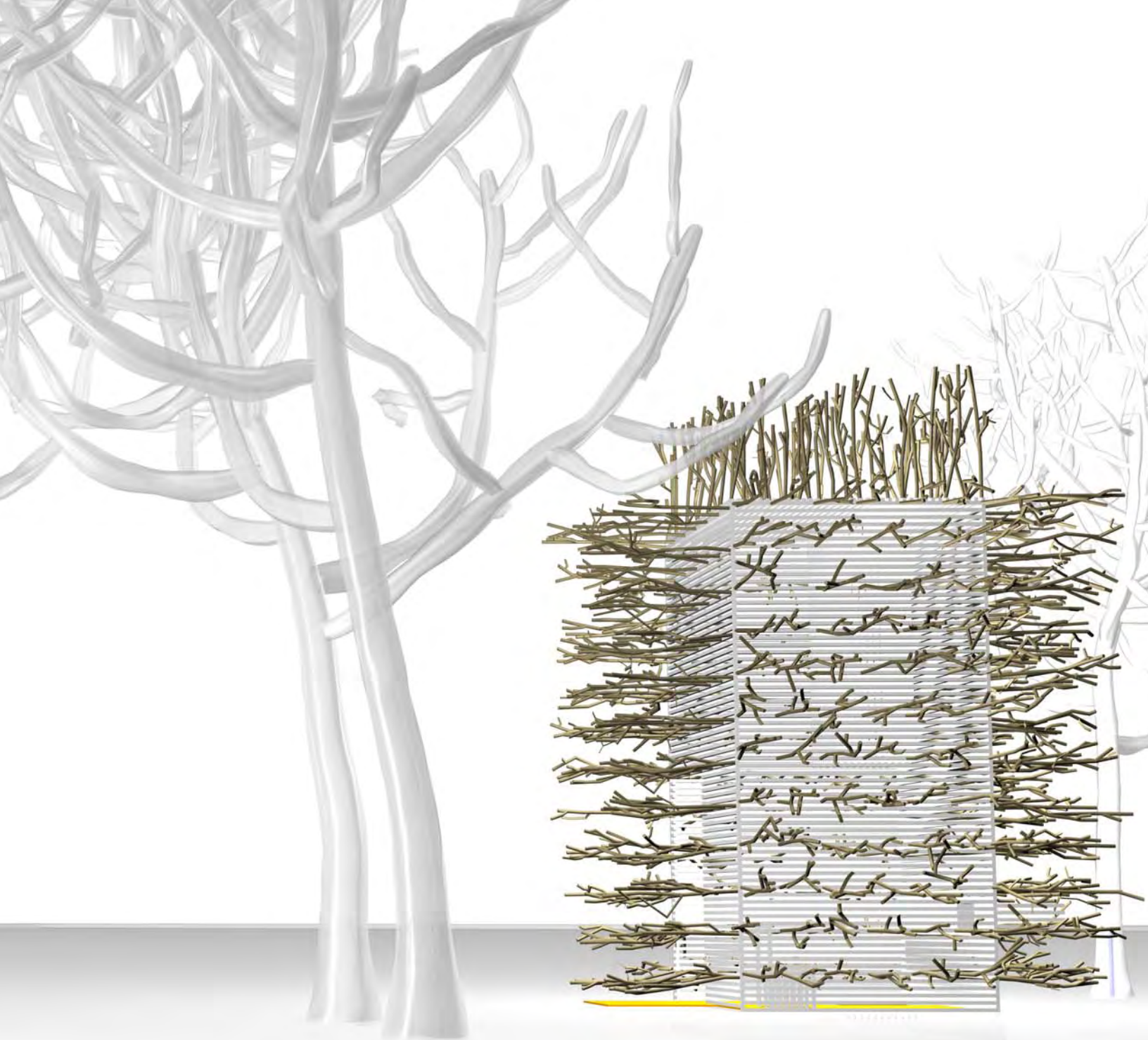


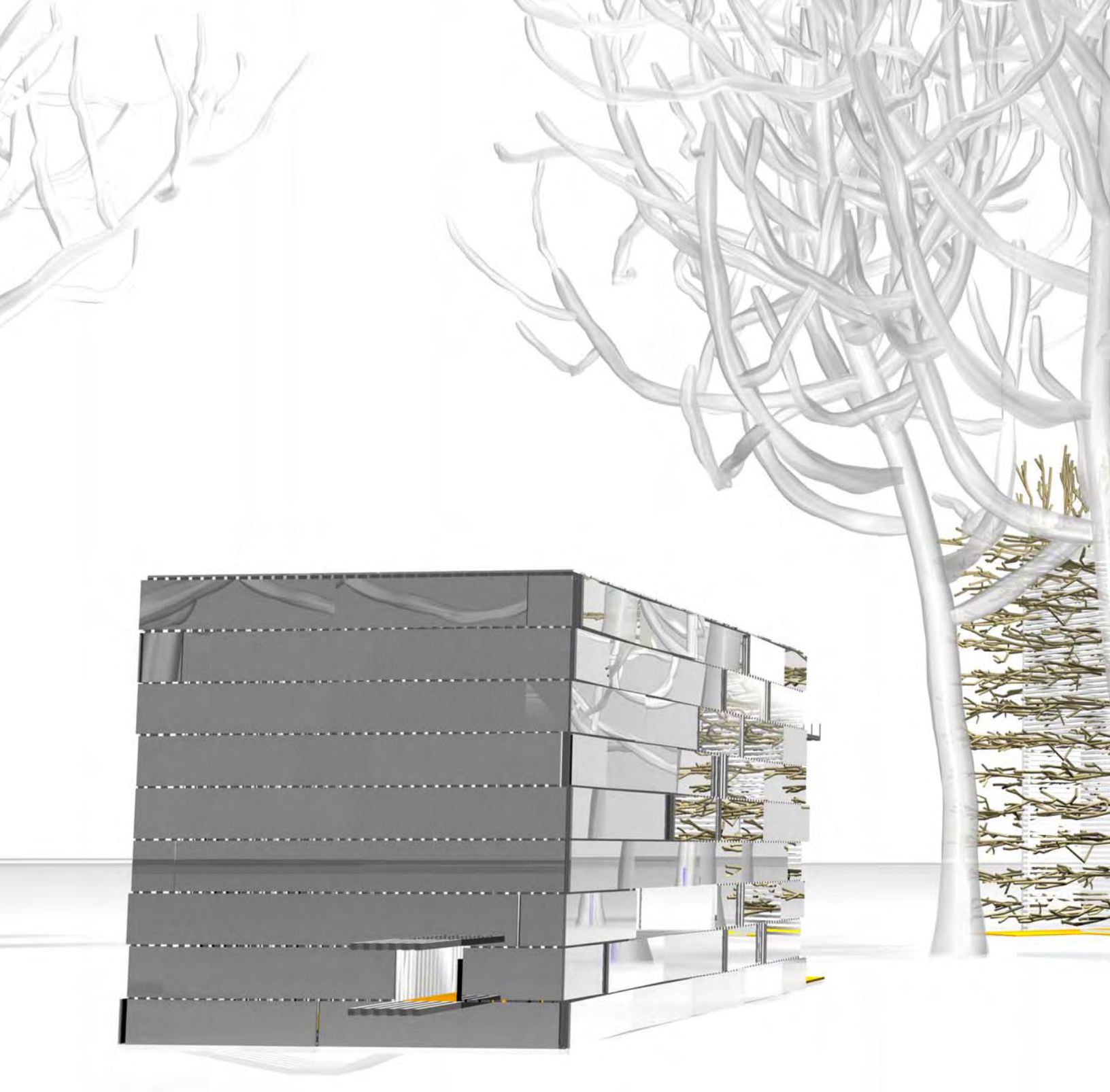
- dropped ceiling
- sunken seating
- plywood floor
- view aperture

- mirror cladding
- view aperture
- 3 stools
- lounge

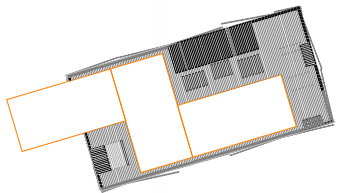
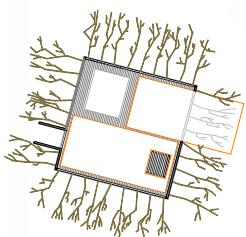


mirror box + branch box: landscape blurs



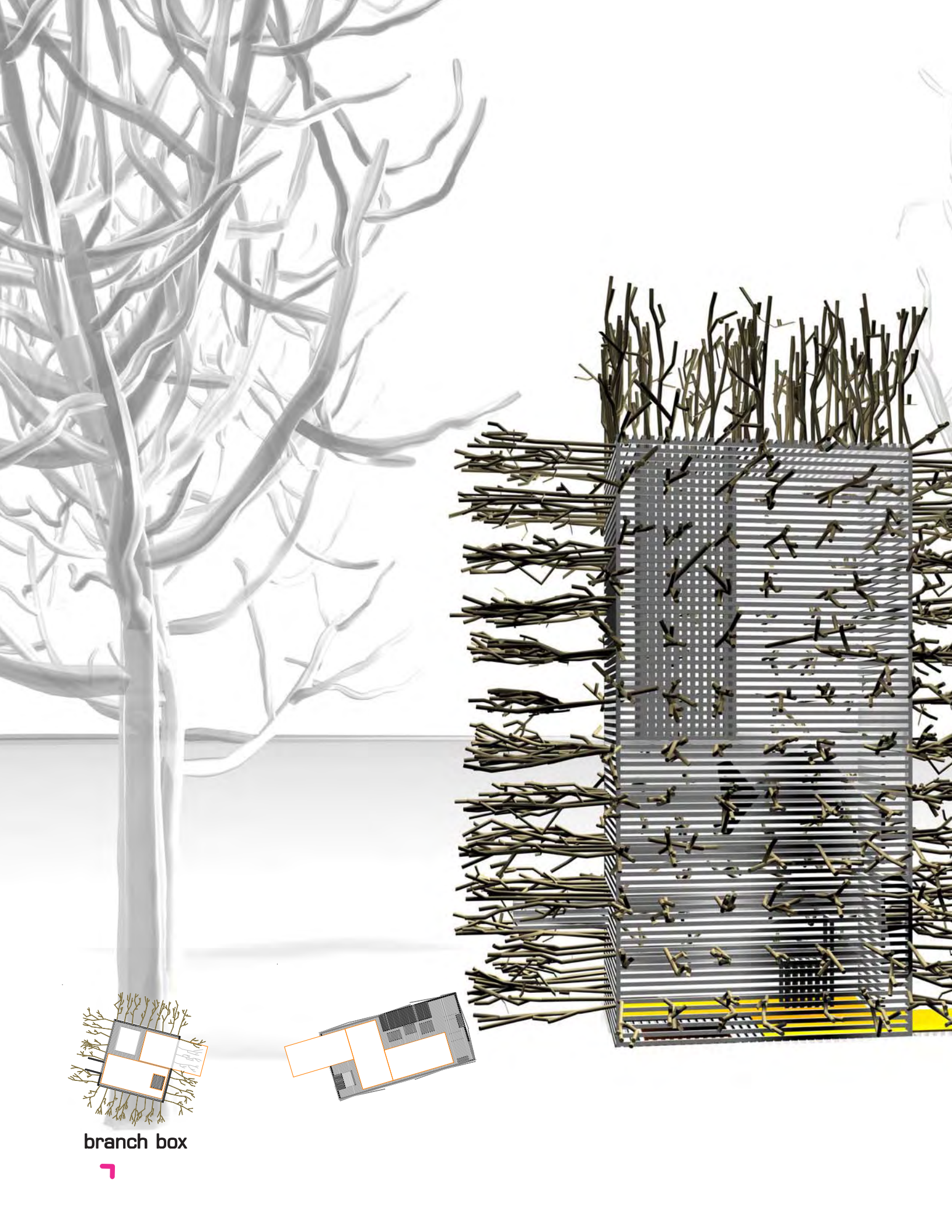


L



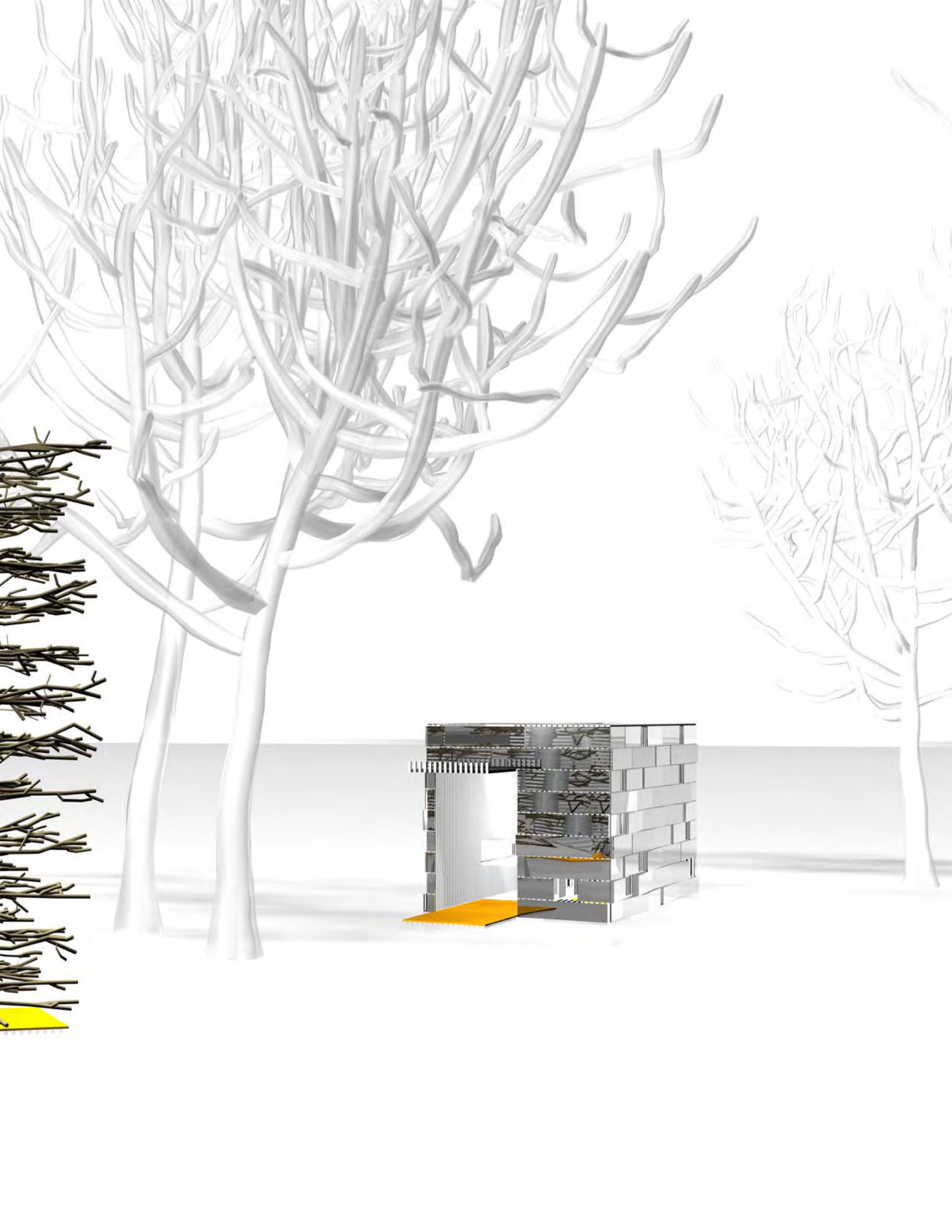
mirror box oculus





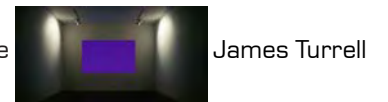
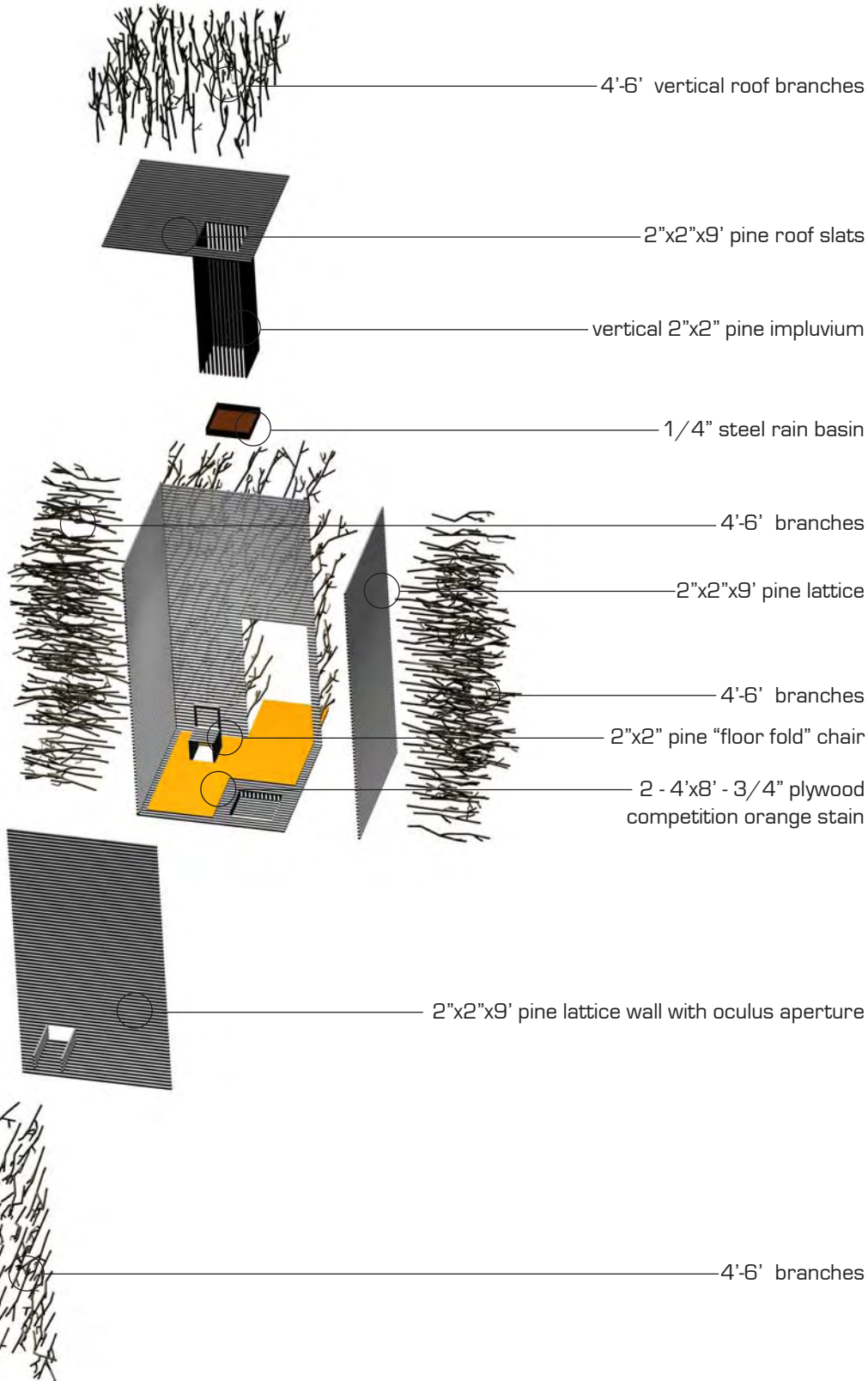
branch box





inventory bu

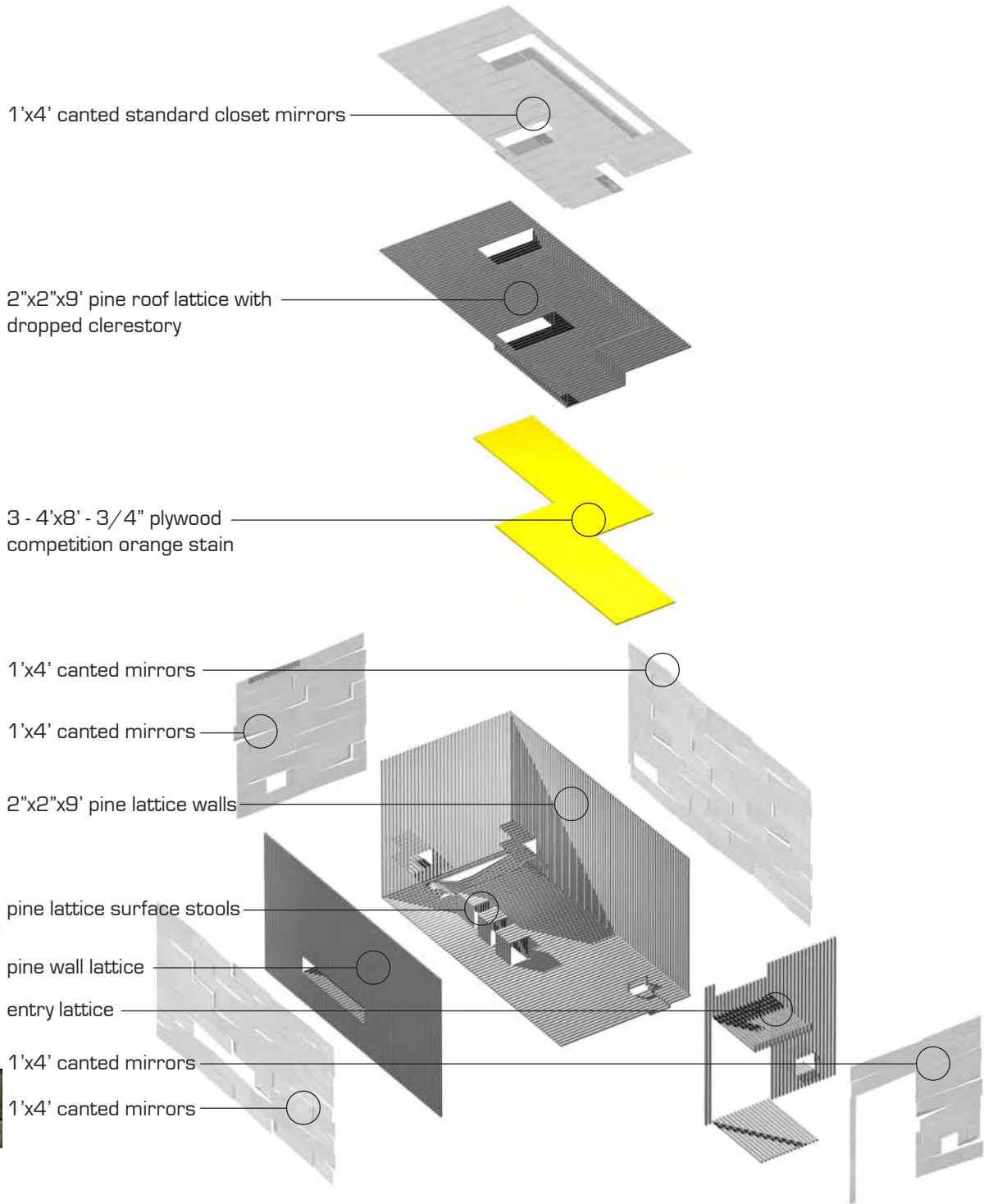
- 371 - 4'-6' branches: re
- 156 - 1'x4' mirrors: 15
- 748 - 9' pine 2"x2": 74
- 1 - 4'x8' - 1/4" sheet metal: 1
- 5 - 4'x8' - 3/4" plywood: 5
- gravel:
- hardware:
- total:



component inventory

Budget

recycled	\$0
56 x \$5	\$780
48 x \$2	\$1496
x \$40	\$40
x \$25	\$125
	\$100
	\$250
	\$2800 materials



mirror room



Carl Andre



James Turrell



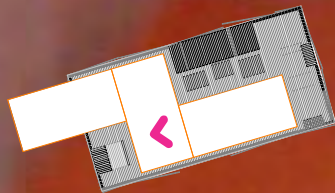
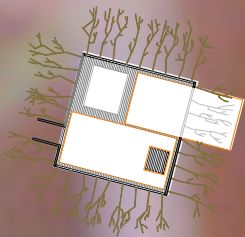
Anish Kapoor





mirror box - undulating fractal surface





mirror box interior - view towards cockpit + door

